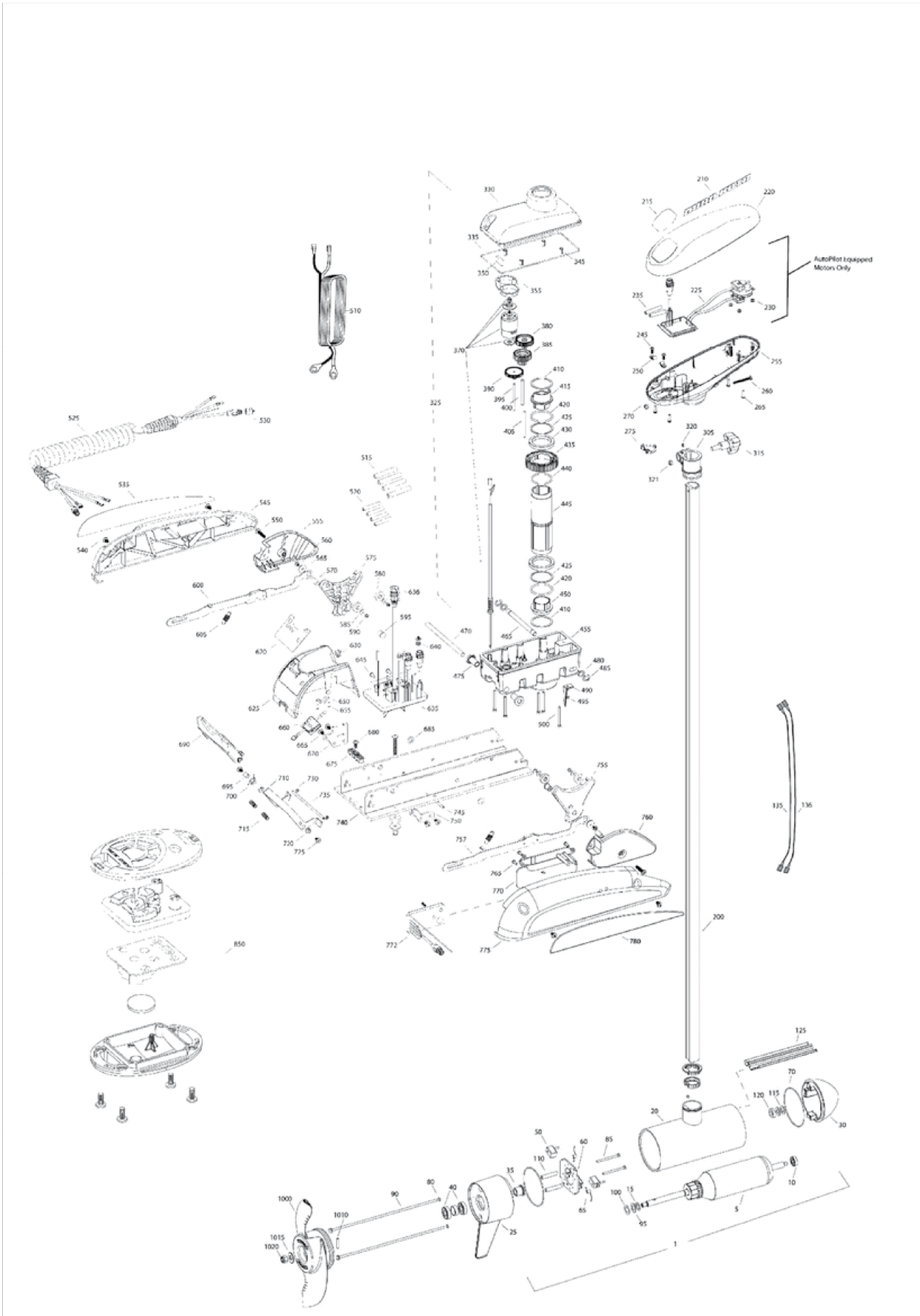




MINN KOTA®

# RIPTIDE 101 ST



MINN KOTA®

W W W . N A V I C O M . F R





MINN KOTA®

# RIPTIDE 101 ST

| Item | P/N       | Description                         | Qty | Item | P/N     | Description                       | Qty | Item | P/N     | Description               | Qty |
|------|-----------|-------------------------------------|-----|------|---------|-----------------------------------|-----|------|---------|---------------------------|-----|
| 1    | 2777077   | 36V Motor 60" SW                    | 1   | 380  | 2302255 | Gear, cluster 3rd stage           | 1   | 655  | 232103  | Screw, 6-20 x .375        | 2   |
|      | 2777076   | 36V Motor 54" SW                    | 1   | 385  | 2302250 | Gear, cluster 2nd stage           | 1   | 660  | 2074082 | Battery meter, 36v        | 1   |
| 5    | 2-100-216 | Armature assembly                   | 1   | 390  | 2302245 | Gear, cluster 1st stage           | 1   | 665  | 2323402 | Screw, 1/4-20 x .375      | 4   |
| 10   | 140-010   | Bearing                             | 1   | 395  | 2302610 | Shaft, gear 1st stage             | 1   | 670  | 2321941 | Bracket, strain relief    | 1   |
| 15   | 788-040   | Retaining ring                      | 1   | 400  | 2302620 | Shaft, gear 3rd stage             | 1   | 675  | 2321310 | Strain relief, wire       | 1   |
| 20   |           | Included in #200 assembly           |     | 405  | 2302615 | Shaft, gear 2nd stage             | 1   | 680  | 2323405 | Screw, 1/4-20 x .5        | 1   |
| 25   | 2-300-370 | Brush end housing assembly          | 1   | 410  | 2321704 | Washer, thrust                    | 2   | 685  | 2333100 | Speed nut, .375           | 2   |
| 30   | 421-376   | Plain end housing assembly SW       | 1   | 415  | 2321515 | Liner, output tube                | 1   | 690  | 2320216 | Handle, release cover     | 1   |
| 35   | 144-017   | Flange bearing                      | 1   | 420  | 2324608 | O-ring, 224                       | 2   | 695  | 2301700 | Bushing,                  | 1   |
| 40   | 880-025   | Seal                                | 2   | 425  | 2321720 | Shim, O-ring                      | 2   | 700  | 2322701 | Spring, release handle    | 1   |
| 50   | 188-094   | Brush                               | 2   | 430  | 2327308 | Bearing, ball sealed              | 2   | 710  | 2320401 | Handle, release SW        | 1   |
| 60   | 2-600-199 | Brush plate assembly                | 1   | 435  | 2322200 | Gear, output                      | 1   | 715  | 2322712 | Spring, release handle    | 2   |
| 65   | 975-041   | Brush spring                        | 2   | 440  | 2324601 | O-ring, output gear               | 1   | 720  | 2322604 | Bushing, handle           | 2   |
| 70   | 701-043   | O-ring, motor                       | 2   | 445  | 2322030 | Tube, output machined             | 1   | 725  | 2332104 | Screw, 1/4-20 x .625      | 2   |
| 80   | 701-009   | O-ring, thru-bolt                   | 2   | 450  | 2321510 | Collar, drive, bottom             | 1   | 730  | 2323000 | E-clip, 3/16, SS          | 2   |
| 85   | 830-027   | Screw, 10-32 x 2                    | 2   | 455  | 2326507 | Steering housing, Bottom          | 1   | 735  | 2322607 | Pin, follower, handle     | 1   |
| 90   | 830-096   | Thru-bolt                           | 2   | 460  | 2320605 | Leadwire, Steering                | 1   | 740  | 2321902 | Base extrusion, machined  | 1   |
| 95   | 990-051   | Washer, steel                       | 2   | 465  | 2322601 | Pin, latch, SS                    | 1   | 745  | 2322912 | Spring pin,               | 2   |
| 100  | 990-052   | Washer, nylontron                   | 2   | 470  | 2322603 | Pin, pivot, SS                    | 1   | 750  | 2321951 | Bracket, sideplate        | 1   |
| 110  | 973-025   | Spacer, brush plate                 | 2   | 475  | 2327310 | Bushing, pivot pin                | 2   | 755  | 2323900 | Ramp, 4" right            | 1   |
| 115  | 992-010   | Washer, Belleville                  | 2   | 480  | 2321702 | Washer, flat .375                 | 2   | 757  | 2994201 | Arm, release, Right       | 1   |
| 120  | 990-045   | Spacer, thrust                      | 1   | 485  | 2263011 | E-ring .375                       | 2   | 760  | 2321920 | Skid, right               | 1   |
| 125  | 582-013   | Clip, retaining, short              | 1   | 490  | 2322702 | Spring, latch pin                 | 2   | 765  | 2301310 | Screw, 8-18 x .5          | 3   |
| 135  | 640-025   | Leadwire, black                     | 1   | 495  | 2323410 | Screw, 8-32 x .75                 | 1   | 770  | 2370221 | Cover, access, SW         | 1   |
| 136  | 640-133   | Leadwire, red                       | 1   | 500  | 2323408 | Screw, 8-32 x 2                   | 1   | 772  | 2374090 | Copilot Receiver Board    | 1   |
| 200  | 2777315   | Tube, composite 60" SW              | 1   | 510  | 2090651 | Leawire, 10 ga                    | 1   | 775  | 2321911 | Sideplate, right, SW      | 1   |
| 205  |           | Included in #200 assembly           |     | 525  | 2991273 | Coil cord, 45"                    | 1   | 780  | 2325642 | Decal, sideplate, right   | 1   |
| 210  | 2325666   | Decal, cover                        | 2   | 529  | 2991271 | Coil cord, 54"                    | 1   | 850  | 2994095 | Remote assembly           | 1   |
| 215  | 2325684   | Decal, ctrl box 101 RT Autopilot    | 1   | 530  | 2302020 | Cap, dust, coil cord, non-AP only | 1   | 851  |         | Case, cover, transmitter  | 1   |
| 220  | 2320201   | Cover, ctrl box                     | 1   | 535  | 2325643 | Decal, sideplate, left            | 1   | 860  |         | Keypad, transmitter       | 1   |
| 225  | 2324030   | Ctrl board, compass, Autopilot only | 1   | 540  | 2323405 | Screw, 1/4-20                     | 4   | 865  |         | Transmitter board         | 1   |
| 230  | 2302960   | Grommet, compass, Autopilot only    | 3   | 545  | 2321916 | Sideplate, left                   | 2   | 870  |         | Battery, transmitter      | 1   |
| 235  | 2305415   | Wire insulator                      | 3   | 550  | 2323403 | Screw, 1/4-20 x .375 SS           | 2   | 875  |         | Case, bottom, transmitter | 1   |
| 245  | 2372100   | Screw, 8-18 x .625                  | 3   | 555  | 2321925 | Skid, left                        | 1   | 880  |         | Screw, 4-24               | 4   |
| 250  | 2052510   | Cable clamp                         | 3   | 560  | 2323422 | Screw, 10-24 x .375               | 2   |      |         |                           |     |
| 255  | 2322501   | Ctrl box                            | 1   | 565  | 2321700 | Washer, #10 SS                    | 2   |      |         |                           |     |
| 260  | 2332102   | Screw, 10-24                        | 1   | 570  | 2323501 | Bolt, shoulder                    | 2   |      |         |                           |     |
| 265  | 2372100   | Screw, 8-18 x .625                  | 4   | 575  | 2323905 | Ramp, 4" left                     | 1   |      |         |                           |     |
| 270  | 2333101   | Nut, 10-24                          | 1   | 580  | 2325117 | Pad, rubber rest                  | 4   |      |         |                           |     |
| 275  | 2224702   | Plug, ctrl box                      | 1   | 585  | 2321706 | Washer, #8                        | 4   |      |         |                           |     |
| 305  | 2771500   | Depth collar assembly               | 1   | 590  | 2323412 | Screw, 8-18 x .25                 | 4   |      |         |                           |     |
| 315  | 2260906   | Knob (included in #305)             | 1   | 595  | 2324706 | Insert, ramp                      | 2   |      |         |                           |     |
| 320  | 2321706   | Washer (included in #305)           | 1   | 600  | 2994203 | Arm, release, left                | 1   |      |         |                           |     |
| 321  | 2323102   | Nut (included in #305)              | 1   | 605  | 2322710 | Spring, extension                 | 2   |      |         |                           |     |
| 325  | 2997026   | Steering housing                    | 1   |      |         | Cover, speed control with decal   | 1   |      |         |                           |     |
| 330  | 2326502   | Steering housing top                | 1   |      |         | Decal, speed control              | 1   |      |         |                           |     |
| 335  | 2324604   | O-ring, case seal                   | 1   | 620  | 2325651 | Cover, speed control              | 1   |      |         |                           |     |
| 345  | 2305605   | Roll pin 5/16                       | 4   | 625  | 2320211 | Strain relief                     | 1   |      |         |                           |     |
| 350  | 2308601   | Breather, filter                    | 1   | 630  | 2322901 | Control board, 24-36v             | 1   |      |         |                           |     |
| 355  | 2328610   | Cradle, motor                       | 1   |      |         | Switch-reed repair kit            | 1   |      |         |                           |     |
| 360  | 2302240   | Pinion gear                         | 1   |      |         | Dust plug                         | 1   |      |         |                           |     |
| 365  | 2300265   | Cap, motor, plastic                 | 1   | 636  | 2320208 | Cap, dust, control board          | 1   |      |         |                           |     |
| 370  | 2327025   | Motor, steering, 36V                | 1   | 640  | 2320203 | Cap, dust, control board          | 1   |      |         |                           |     |
| 375  | 2300560   | Cap, spacer, plastic                | 1   | 645  | 2323406 | Screw, 10-24 x                    | 2   |      |         |                           |     |
|      |           |                                     |     | 650  | 2321315 | Holder, connector                 | 1   |      |         |                           |     |